



# Phoenix ADAS Mobile MAX Package (C)

## Built for Precision

The Phoenix ADAS Mobile is a foldable calibration frame for passive and active ADAS systems in cars. Now, technicians can set up the Phoenix ADAS Mobile in less than 30 minutes and do the job from anywhere. Compatible with any of TOPDON's Phoenix Scanners, this device gives professionals the capability to do intricate calibrations on the newest cars. The Max Package gives its users robust calibration coverage, including all targets from the deluxe package, and an additional 14 targets. This package includes targets for night vision systems, rear camera warnings, around view monitoring, and lane departure warnings. The ADAS Max Package is for shops that want to spend their money once and work without limits for years to come.

### Features

• **Totally Mobile**

The Phoenix ADAS Mobile features a collapsible design for convenience, easy storage, and unmatched portability. With foldable arms and folding base legs you can easily put away this fully collapsible tool.

• **Quick Set-Up**

With this tool, professionals can calibrate ADAS systems from an auto shop, a parking lot, or even at a client's driveway. Its unmatched portability and convenience makes your business more productive and profitable.

• **Unmatched Precision**

A high-precision 5-lasers device will assist you to position the ADAS calibration tool with exactness. Featuring a multifunctional base with 360-degree swivel wheels, it allows you to adjust the height and make adaptations to calibrate when working on uneven ground.

### Specs

The Phoenix ADAS Mobile comes safely packaged in a Wooden Case (3.8\*3.6\*2.0 ft; 308lb). Large targets are shipped separately in Carton Packaging (4.5 ft\*0.3 in\*3.3 ft; 39lb).

### What's in the Box



Five Line Laser  
LAM09-01



Cross Laser  
LAM09-02



Laser Reflector  
LAM09-03



Auxiliary Mirror  
LAM09-04



L-Type Positioning Bracket  
LAM09-05



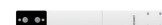
Plumb Bob  
LAM09-06



Targets Storage  
Bracket LAM09-07

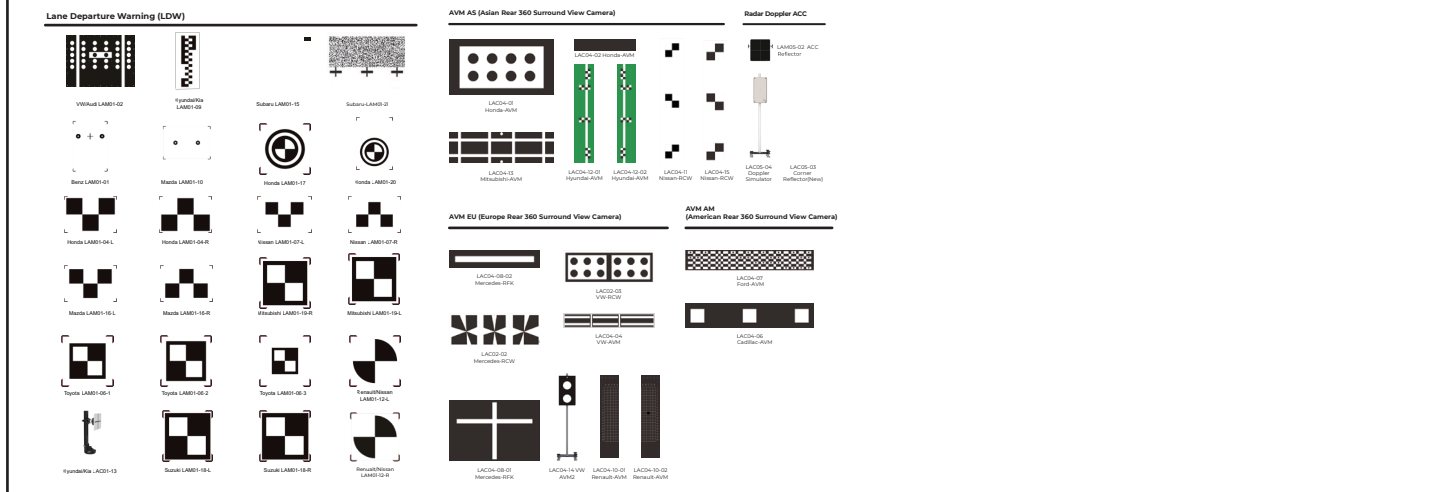


Targets Extension Rod  
LAM09-08



Targets Extension Rod II  
LAM09-09

The **Phoenix ADAS Mobile MAX Package** comes with the **full set of accessories**, all of the **24 LDW targets** from the standard package, as well as the **ADAS Rear Camera & AVM Panels (US, Euro, and Asian)**; Doppler Simulator (**LAC05-04**); Radar Cone Target Configuration (**LAM05-02**), and Corner Reflector (**LAC05-03**).



In addition to that, the MAX package expands your coverage by offering:

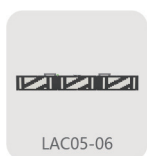
### Night Vision System (NVS) Targets



Audi, GM, VW  
(LAC06-01)

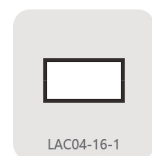


Mercedes  
(LAC06-02)



Audi, VW  
(LAC05-06)

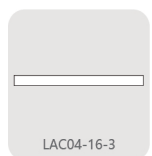
### Around View Monitoring (AVM) Targets



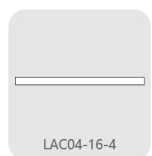
Toyota-AVM  
(LAC04-16-1)



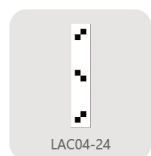
Toyota-AVM  
(LAC04-16-2)



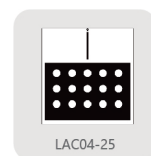
Toyota-AVM  
(LAC04-16-3)



Toyota-AVM  
(LAC04-16-4)

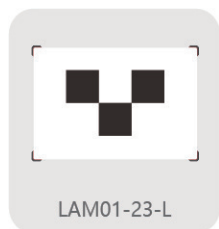


Nissan-RCW  
(LAC04-24)

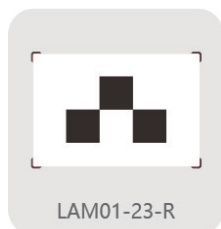


Toyota-RCW  
(LAC04-25)

### Lane Departure Warning (LDW) Targets

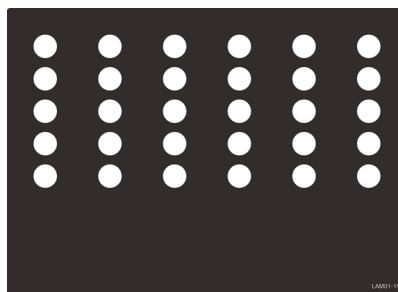


Sprinter LDW  
LAM01-23-L



Sprinter LDW  
LAM01-23-R

### Other Targets



Alfa Romeo  
LAM01-11



Honda-Lane  
Watch LAC04-17